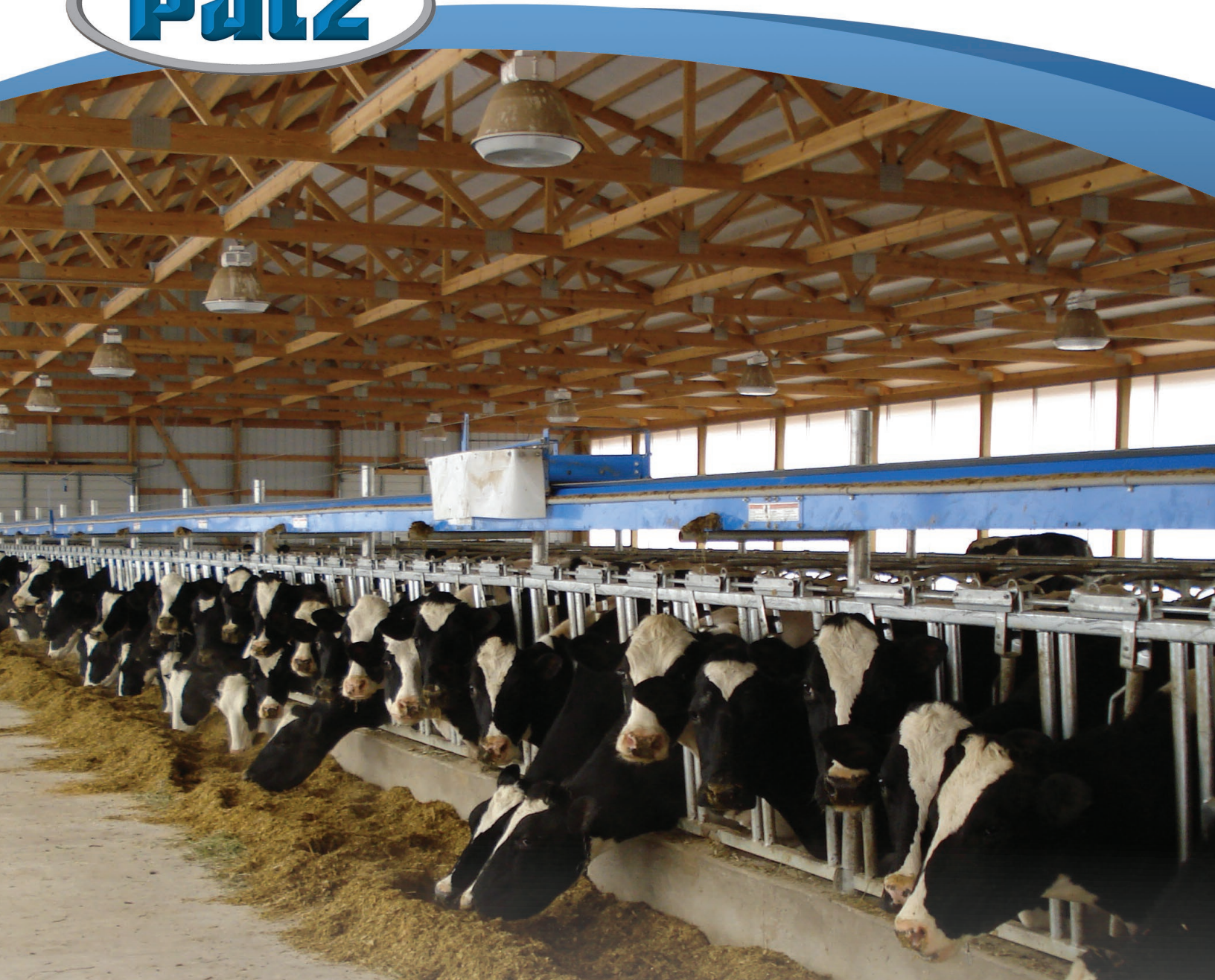




# 2405 & 2410 BELT FEEDERS



## SIMPLE, RELIABLE, & FLEXIBLE

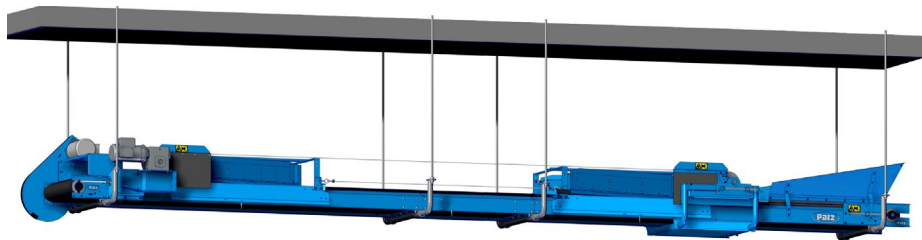
- ✓ Feed up to 10 lots
- ✓ High capacity for fast feeding
- ✓ Customize to fit your needs
- ✓ Designed for indoor use

### INVESTMENT FLEXIBILITY

*Ask Dealer for Financing Details*



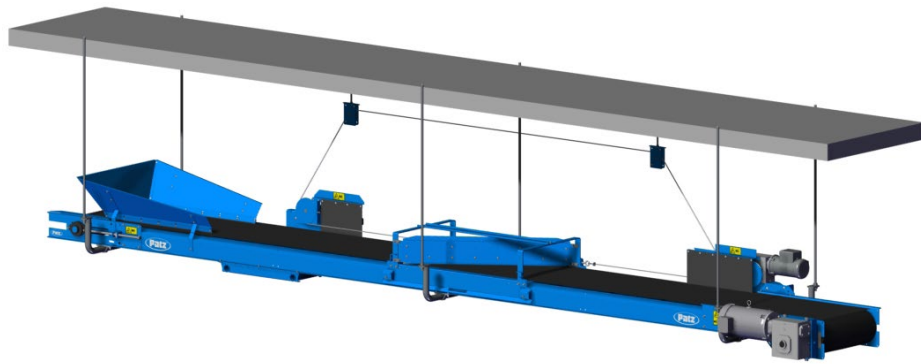
**2405**



Shown:

- 4 Belt Speeds
- Forward: ≤100' (30.48m)  
*(material moving toward drive end)*
- 5" Drive Pulley
- 24" Convey Width
- Drive Options: V-Belt or Direct Drive
- Options: Idler end or central loading hopper

**2410**



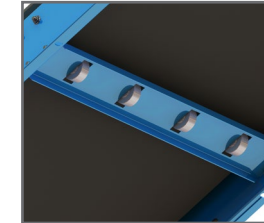
Shown: 2-MOTOR DRIVE FEEDER

- 4 Belt Speeds
- Forward: ≤400' (121.92m)  
*(material moving toward drive end)*
- 10" Drive Pulley
- 24" Convey Width
- Adjustable decline or straight-line conveying and plow-off
- Drive Options: Direct Drive
- Options: Belt wiper and stands

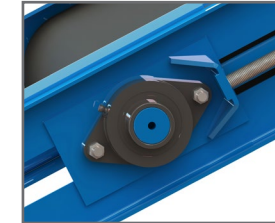
**STANDARD FEATURES**



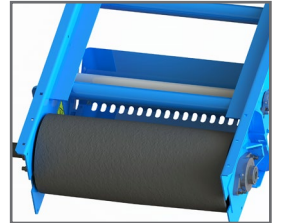
Open pan design provides extra capacity and reduces belt friction using less power. Fin pulley reduces build-up.



Return wheels carry belt on return bottom reducing friction for longer belt life and less strain on drive system.

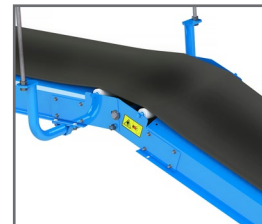


Sealed and greasable precision bearings ensure trouble-free and long-life continuous duty.

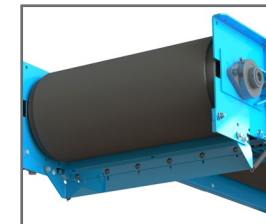


Easily adjust belt tension and tracking. A 5/8" screw provides up to 20" of belt take-up.

**OPTIONAL FEATURES**



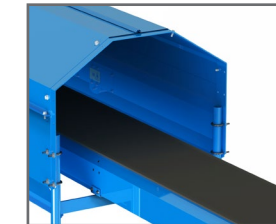
Elevate and convey level with **adjustable elbow**. A concave belt creates deep trough when passing elbow for optimal capacity.



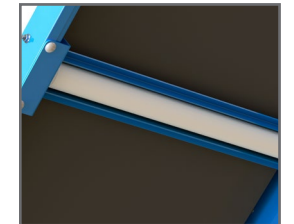
Optional **urethane blade belt wiper** cleans the top surface of smooth belting.



**Loading hopper** controls material and helps prevent spillage. Available for idler end or central hopper.

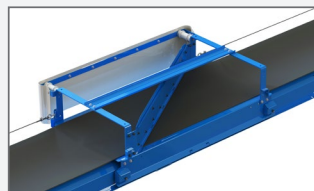


**Covers** available to protect material and conveyor from wind, rain, and contaminants.

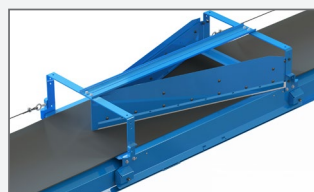


**Return rollers** carry belt on return bottom to reduce friction for longer belt life and less strain on drive system.

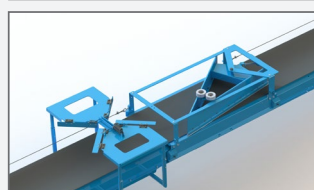
**PLOWS**



**One-way Floating Plow.** Feed drops off one side of feeder only. Mount to plow-off on right or left side.



**One-way V-Plow.** Feed drops off both sides of feeder simultaneously.



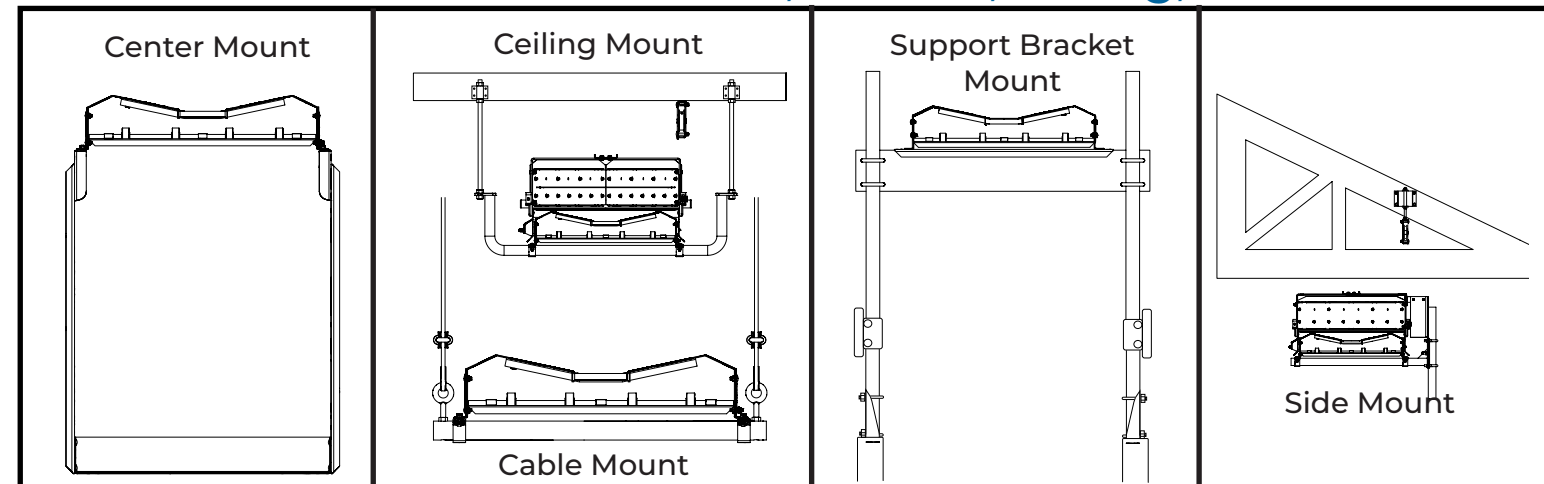
**Two-way Floating V-Plow.** Feed drops off either side of feeder. Add optional items, Tripper and Deflector, for greater customization.

**PLOW DRIVE CONTROL BOX ASSEMBLY: SINGLE OR MULTI-LOT**



- INCLUDES:**
- Plow Drive Control Box (Available in 1 or 3 phase, 230 V power, 50/60 Hz. *Higher voltage option available*)
  - Fiberglass enclosure
  - 3" black & white touch screen display
  - Two (2) operational modes: MAN(ual) & LOT
  - Ten (10) configurable multi-lot capability
  - PARK feature
  - STOP button with built in safety feature
  - Built in tripper control
  - Two (2) Proximity Sensors
  - 1 HP Motor


**MOUNTING OPTIONS: Center, Bottom, Ceiling, Side**



# 2405 & 2410 Belt Feeders

## SPECIFICATIONS

STANDARD Equipment	2405	2410
<b>Direction</b>	Forward (material moving toward drive end)	
<b>Overall Lengths</b> Max length of individual bed section: 10' (3.05m); Bolt sections together for lengths > 10'; Intermediate lengths are possible by field cutting	20' - 100' (6.1 - 30.48m) 10" (3.05m) increments	20' - 400' (6.1 - 121.92m) 10" (3.05m) increments
<b>Frame</b> concave, open bed, formed 14 ga. powder coated steel	Depth: 6-1/2" (165mm) Width: 26-3/4" (679mm)	Depth: 6-1/2" (165mm) Width: 26-3/4" (679mm)
<b>Belt Width</b>	24" (610mm)	24" (610mm)
<b>Belt Speed</b> dependent on drive selected	65 - 370 FPM	95 - 325 FPM
<b>Belt</b>	Black, PVC 120 COS, smooth standard or cold temp Other belts available upon request	
<b>Drive Motors</b>	1 - 3 HP - 1 or 3 phase electric motor drive	3 - 7.5 HP - 1 or 3 phase electric motor drive
<b>Drive Pulley (diameter)</b> Crowned, steel, rubber lagged	5" (127mm)	10" (254mm)
<b>Tail Pulley (diameter)</b> Finned, steel	5" (127mm)	5-3/4" (146mm)
<b>Bearings</b> Long-life, sealed, prelubricated, greasable	1 1/4" B (31.75mm) Idler & Drive End	1 5/16" B (49.21mm) Idler & Drive End
<b>Belt Take-up</b>	Screw-type take-up at tail pulley	
<b>Load Capacity</b>	≤209 ft <sup>3</sup> /min (5.91m <sup>3</sup> /min) 3700 lb/min (1678 kg/min)	≤180 ft <sup>3</sup> /min (5.09m <sup>3</sup> /min) 3250 lb/min (1474 kg/min)
<b>Support Span</b>	≤10' (3.04m) between supports	
<b>Electrical Controls</b>	Customer supplied	
<b>Assembly</b>	Conveyor supplied unassembled	
OPTIONAL Equipment	2405	2410
<b>Covers</b>	16 ga. powder coated in 10' (3.05m) lengths	
<b>Conveyor Supports</b>	Supports and mounting hardware available	
<b>Loading Hoppers</b>	Funnels material into conveyor troughs	
<b>Belt Wipers</b>	Urethane wiper blade for cleaning top of belts	
<b>Adjustable Elbow</b>	0 - 30°	
<b>Convey Sides</b>	Positions material and helps seal edges to prevent material under belt	
<b>Movable Plow</b>	Designate location	
<b>Plow Drive Control Box Assembly</b>	Single Lot or Multi-Lot; 1 or 3 Phase, 50/60 Hz	
<b>Proximity Switch Assembly</b>	Add additional lots or plow park feature using plow drive control box; includes proximity switch and cable	
<b>Tripper Assembly</b>	Trip 2-way plows right or left from a remote location	
<b>Tripper Assembly with Controls</b>	Trip 2-way plows on each pass. NOT electrically controlled.	

 **CAUTION:** Never operate Patz equipment without all shields and guards in place. *Safety Is No Accident.* Before operating any piece of equipment, be sure to read and understand the operator's manual. This manual should be kept with the machine at all times. Additionally, make sure all safety shields and devices are functioning properly and are securely in place. For some photos in this brochure, guards were removed for photographic purposes only to allow viewing of the equipment features. Before operating equipment, all guards must be in place. Because Patz continually improves and updates products, Patz reserves the right to change the construction of machines or attachments or any part thereof without incurring any obligation to make like changes on Patz machines, or attachments previously delivered. Specifications and prices subject to change without notice.